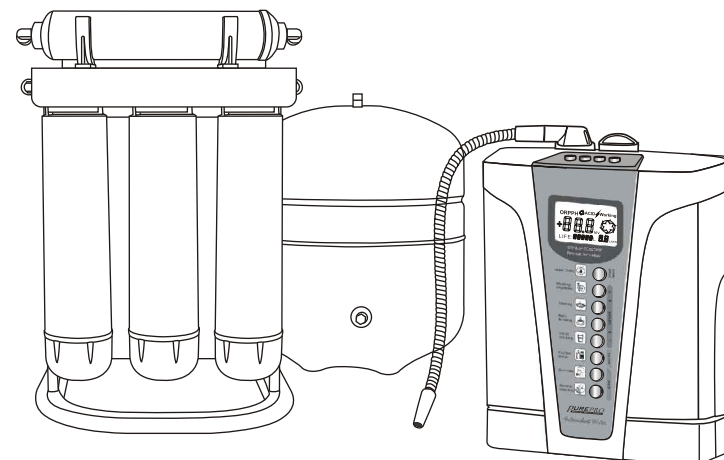


## Memo

Type of product	ERO-Q7		
Date of purchase			
Name		Tel	
Address			

**PUREPRO**  
DRINKING WATER SYSTEM

## PERFECT WATER SERIES



## ERO-Q7 USER'S MANUAL

- |                                   |                           |
|-----------------------------------|---------------------------|
| 01 About perfect water            | 12 Installation diagram   |
| 03 Why perfect water is popular   | 14 Change filters         |
| 04 Components                     | 16 Change membrane        |
| 05 Cartridge filters              | 17 Trouble shooting guide |
| 07 Preparation                    | 18 FAQ                    |
| 08 Panel operations and functions | 19 Memo                   |
| 11 Tubing connection diagram      |                           |

**Thank you very much for selecting Pure-Pro Water Corp.**

In order to bring the best use of your system, please read the user's manual carefully before installation and follow the regulations.

## About Perfect Water

### PurePro® Perfect Water Series ( RO + Water Ionizer )

More and more people understand that the "perfect water" system would combine the purity of Reverse Osmosis (R/O) and the tremendous benefits provided by alkaline, ionized water. Historically this has not been easily achieved for a variety of reasons. Our water technology experts at PurePro have solved the problem of combining these two phenomenal yet very different water technologies. Now you can have perfectly clean AND perfectly healthy water by installing RO system with water ionizer!

### Features

- Four levels of alkaline water.
- Two levels of acid water, including super-oxide.
- Built-in auto-flushing electrode.
- Filter water (non-ionized) - by Reverse Osmosis Water System
- Super anti-oxidant water
- Alkaline water with pH 8.0~10.0
- Stainless steel output spout
- Unique post-operation automatic and silent cleansing for extended lifespan
- Sound confirmation every time you select a different pH level
- Filter change required indicator
- Easy 1-minute change filter compartment
- Hydrogen-rich water (hydrogen gas bubbles in your glass)
- High negative ORP water (to fight free radicals)
- Smaller molecular clusters
- Mineralized with trace minerals
- PurePro USA Water Ionizer faucet
- Clean, safe, tasty water - straight from your tap
- Energizing & Healing water

### Specifications: (Reverse Osmosis)

- Model: ERS-105-NF
- Membrane: 100 GPD / 378 LPD NF Membrane
- Operation pressure: 50 - 100 PSI
- Dimensions: (cm) 29 (L) x 21 (W) x 42.5 (H) - System  
(cm) 28 (L) x 28 (W) x 35 (H) - Tank
- Weight: 8 kg - system  
4 kg - tank

## FAQ

### Q: What is the guarantee on the PurePro system ?

The PurePro system (excluding filters) is guaranteed for 1 year for material and workmanship. All defective parts will be replaced free within the first year under natural breakdown. The membrane has one year pro-rated guarantee.

### Q: What factors affect the quantity and the quality of the water production?

There are four major variables to consider:

1. **Pressure**-The greater the water pressure, the better water quantity and quality it produced. Water pressure of 60 PSI is ideal.
2. **Temperature**-76°F is the ideal water temperature for R.O. 40°F water will cause the production of R.O. water to fall to half of that at 76°F. The maximum water temperature recommended is 85°F.
3. **Total Dissolved Solids (TDS)**-The higher the amount of dissolved contaminants in the water, the lower the quantity of water produced. A high level of TOTAL DISSOLVED SOLIDS can be overcome with additional water pressure.
4. **Membrane**-Different membranes have different characteristics. Some produce more water than others; some have better contaminant rejection capabilities; some have greater resistance to chemical abrasion for longer life. PurePro system includes NF33-1812-100 The Thin Film Composite (TFC) membranes combine the best of these characteristics and are considered the finest membrane in the world.

### Q: What is the maintenance schedule for the PurePro system ?

The three pre-filter cartridges should be changed every 6 months. The 5 micron sediment cartridge filter is the first one; the second is a carbon cartridge filter, and the third one is a 1 micron sediment filter. (some systems come with the Extruded carbon filter.) Failure to change the cartridge every 6 months may cause chlorine to destroy the membrane.

### Q: What does the PurePro series drinking water taste like?

The taste of the PurePro water depends on the amount of contaminants in the tap water originally. If 95% of dissolved minerals and chemicals are removed, the R.O. water may taste like distilled water (no minerals), bottled water (low mineral), or natural spring water (moderate mineral content).

## Trouble Shooting Guide

Phenomenon	Reason for problems and handling guideline
Power background light not on displays nothing	Ensure power cord is connected to an electrical outlet
Back light is not on and nothing gets displayed when generating	1. Water pressure too low, the machine does not work correctly, operator installs additional water pump. 2. Check for correct installation of filter cartridge. The machine does not work when filter cartridge is misplaced. Unfold the bent part of the water supply hose.
Ionized water or pure water comes out dirty	1. Maybe it is time to replace filter cartridge? (Filter cartridge can be bought in distribution agencies) 2. Is the tap only half on? Please let more water flow out from the tap. 3. Is water supply line frozen? Defrost the water supply line before using. Is the indicator light for cleaning required on? Please perform cleaning.
Electrolyzed alkaline water appears to have white colored stain	Alkaline ionized water is usually white color after being generated. This is due to the air bubbles formed as a result of reaction with electrolysis. It will turn into transparent in a short while and is perfectly safe for drinking.
Container for storing alkaline water shows white floating object or develops thin layer on its inner wall	1. The white floating object is a crystal formation (the solid form of calcium) which reaction of Calcium ion and Carbon Dioxide in the air generates. It is perfectly safe for drinking. 2. The thin layer that can be seen is the solid form of Calcium. Please use vinegar to clean it.
Not using the ionizer for long period of time	Please ensure the power cord is unplugged. Remove water separator and filter device from the purifier.
Alkaline water flowing out from alkaline faucet becomes slower and slower	Maybe gradual formation of Calcium crystal in hose blocks the water outlet, which makes the water flow-out become slower and slower. Please consult with a professional to clean inner hose or purchase special filter cleanser for the ionizer from our company.

## About Perfect Water

### Specifications: (Water Ionizer)

Model	JA-703
Power supply	AC: 220V/50HZ(customized product)110V/60HZ
Power consumption	100-200W
ORP level	+800MV ~ -700MV
Electrolysis material	Nanometer titanium alloys electrolysis trough
In-water pressure	1 ~ 6.5kg/cm <sup>2</sup>
Electrolysis technique	Continuous electrolysis technique (water volume and temperature gauge built-in)
Machine protection installation	Fuse 10A and electrical board: 2A electrical power overheating protection installed, transformer temperature protection installed.
Electrolysis	Processing rate of water 2L/minute: [In-water pressure is 0.1Mpa(about 1kgf/cm <sup>2</sup> )] Water exit volume 3L/minute: [In-water pressure is 0.2Mpa(about 2kgf/cm <sup>2</sup> )](estimate) Electrolysis capacity level: Alkaline 3 level; Acidic 1 level Possible continuous electrolysis duration: (Level 1~2) about 1 hours (Level 3) about 30 Plate cleaning automatically performs every time being used. When intensive cleaning is required after a period of time, Intense cleaning indicator is on. Automatic back cleaning when tap water is closed after processing.
Main machine dimension	Height 330mm x Width 250mm x Depth 155mm
Machine weight	About 5.5kg
Purifier	Total water flowing volume: about 12000L Purifying capacity: take away salty particle residue Remove foul and bad odor
Max. water temperature for continuous usage	40°C
Power cable length	About 9 feet

## Why Perfect Water is Popular

Water Ionizer is a medical device in Japan.

Why? Read on . . .

### ALKALINE WATER IMPROVES CHRONIC HEALTH CONDITIONS

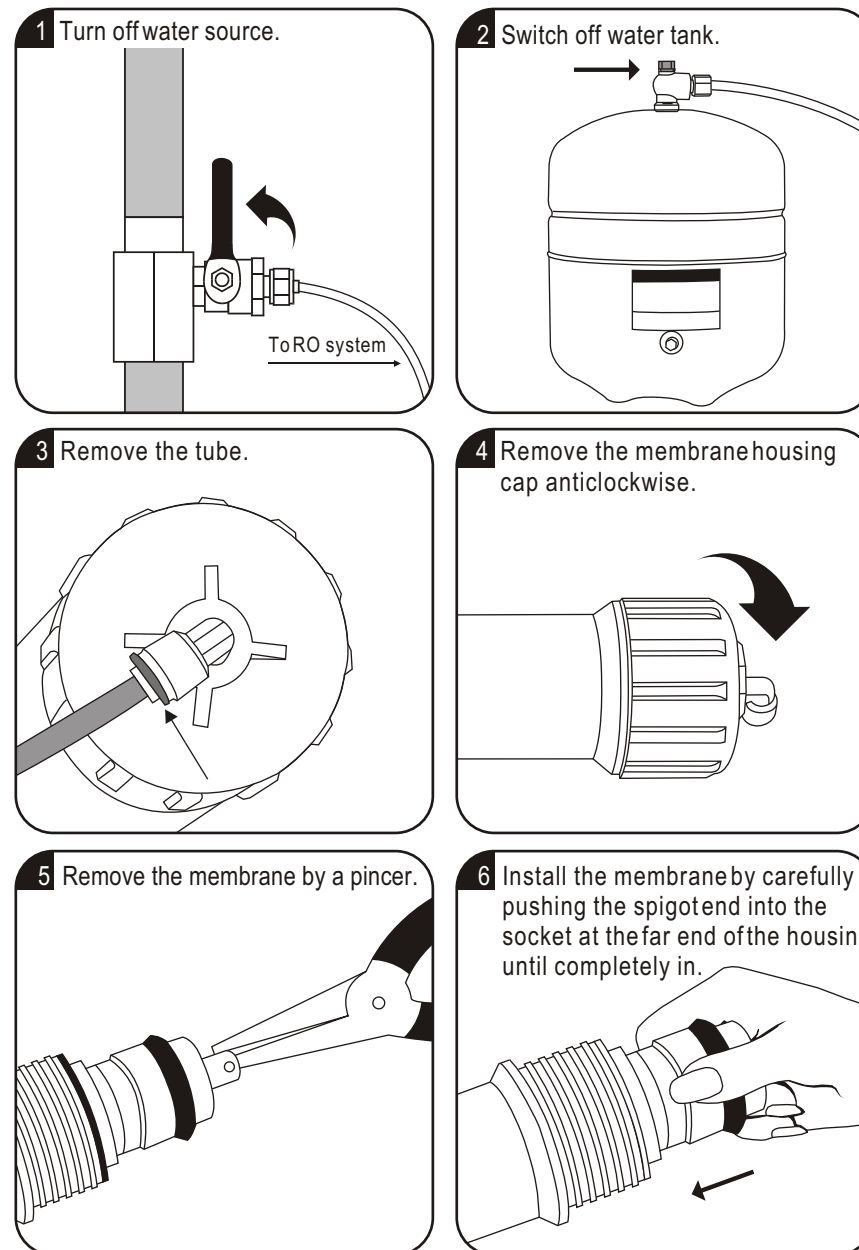
Research in Japan since the 1950's and testimonials indicate the following conditions have been improved from drinking alkaline water:

- Arthritis
- Heartburn
- Chronic fatigue
- Indigestion
- Leg cramps
- High blood pressure
- Poor circulation
- Migraines
- Nausea
- Obesity
- Osteoporosis
- Psoriasis
- Stress

Dr. Otto Warberg received the Nobel Prize for discovering the **cause of cancer** - this being lack of oxygen which is **low alkaline pH**. No disease can exist in an alkaline environment. Japanese medicine has proven this over the last 15 years. Water ionizer can restore proper alkaline pH within weeks.

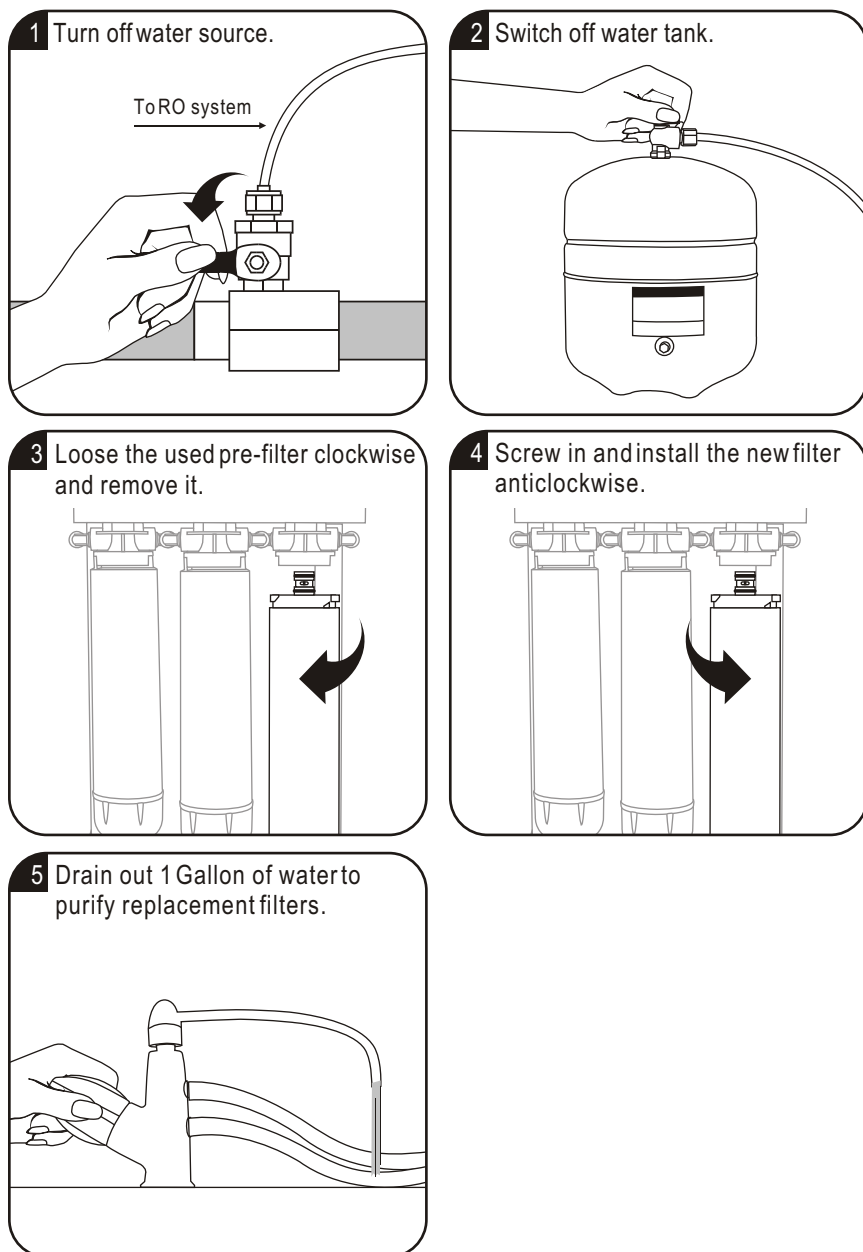
## Change Membrane

### Change membrane: (Reverse Osmosis)



## Change Filters

### Change filters: (Reverse Osmosis)



## Components

### Components: (Water Ionizer)

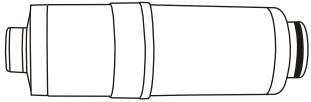
<b>1</b> Snake hose x 1	<b>2</b> Hose clip x 2	<b>3</b> PH testing liquid 10ml
<b>4</b> Water inlet/ Outlet hose x 2	<b>5</b> Hanging fixture x 1	<b>6</b> Suction used to fix water drain hose
<b>7</b> Water Ionizer faucet x 1		

### Components: (Reverse Osmosis)

<b>1</b> Tankball shut-off valve x 1	<b>2</b> Water storage tank x 1	<b>3</b> Deliver-valve x 1
<b>4</b> Water supply connector x 1	<b>5</b> Drain saddle x 1	<b>6</b> Tubing x 1

## Cartridge Filters

### Cartridge filters: (Water Ionizer)



Type: Carbon filter

Main parameter: Filter life 12000L

Water pressure 0.1M pa~0.4M pa

Water quality: Meet the requirement of "Sanitary safety and function criteria of drinking water machine" (2001).

Water source: Municipal tap water

Things to note: Replace filter regularly (The filter life can last for one year at most. If clogged, it is necessary to replace the filter.)

### Cartridge filters: (Reverse Osmosis)



#### (Stage 1) 5 Micron Sediment Filter

This 5micron sediment filter is made of 100% pure polypropylene fibers. High capacity filter removes dusts, particles and rusts. (Service Life: 6 Months)



#### (Stage 2) GAC Carbon Filter

This block carbon filter is composed of high-performance carbon that removes free chlorine, odor, organic contaminants, pesticides and chemicals that contributed to taste and odor. (Service Life: 6 Months)



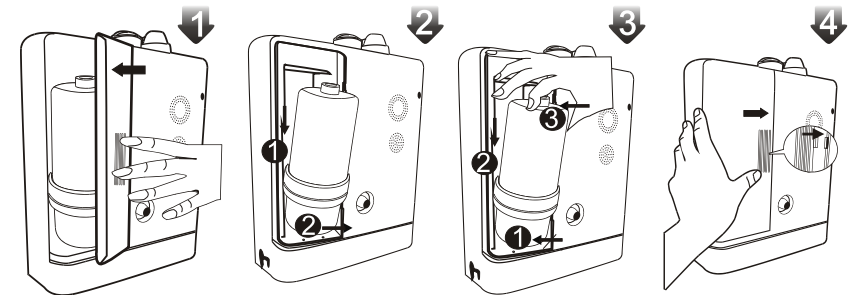
#### (Stage 3) CTO Carbon Filter

This block carbon filter is composed of high-performance carbon that removes free chlorine, odor, organic contaminants, pesticides and chemicals that contributed to taste and odor. (Service Life: 6 Months)

## Change Filters

### Change filters: (Water Ionizer)

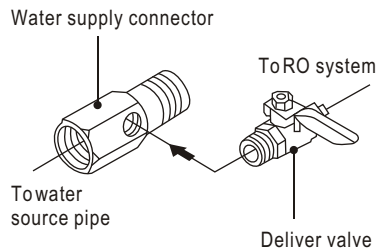
1. Open the filter door on the left side of the water ionizer in the back.
2. Push down slightly on the filter and pull it outward/away from the unit.
3. Put the button of new filter in first and push down. The spring beneath the filter housing will push the filter into the filter housing at the top of the unit. Once the filter is properly seated, push the filter up with your fingers to be certain it is secure and will not leak from the top. If the filter is not properly seated, water may not flow through the unit properly.
4. Replace the filter door.



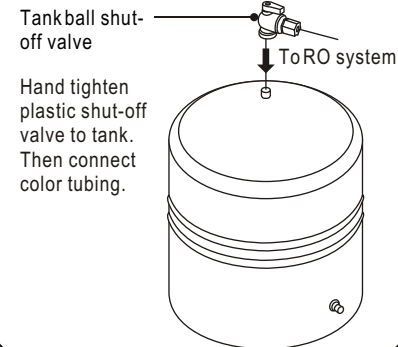
When using the new filter, flush the filter cartridge by running tap water for 2 minutes. DO NOT SWITCH ON ELECTRICAL POWER DURING CARTRIDGE CLEANING.

## Installation Diagram

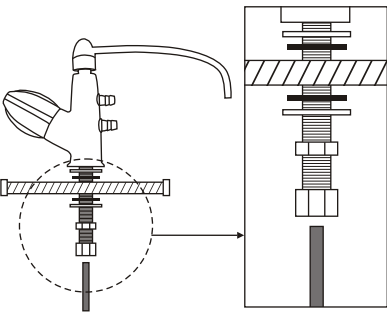
### Input water :



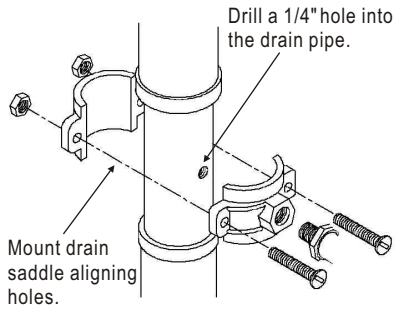
### Install water tank :



### Install faucet :

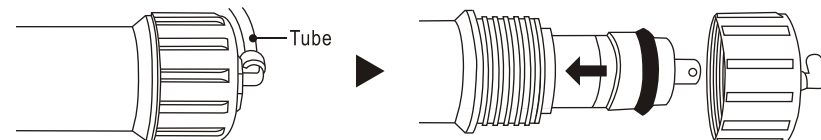


### Install drain saddle :



### Assemble membrane :

- Remove the tube.
- Remove the membrane housing cap.
- Install the membrane by carefully pushing the spigot end into the socket at the far end of the housing until completely in.



## Cartridge Filters



### (Stage 4) NF Membrane

Nanofiltration membrane has a slightly larger pore size than reverse osmosis membrane. Thus monovalent salts like sodium chloride (common table salt) molecules pass through the membrane but large divalent salts of calcium, magnesium and other metals like iron, heavy metals, etc. are all blocked. (Service Life: 2 Years)



### (Stage 5) Post Carbon Filter

NSF approved. This post carbon filter is designed to improve taste. It removes any residual impurities and odors from the tank and provides a finer conditioning of pure water. (Service Life: 1 Years)



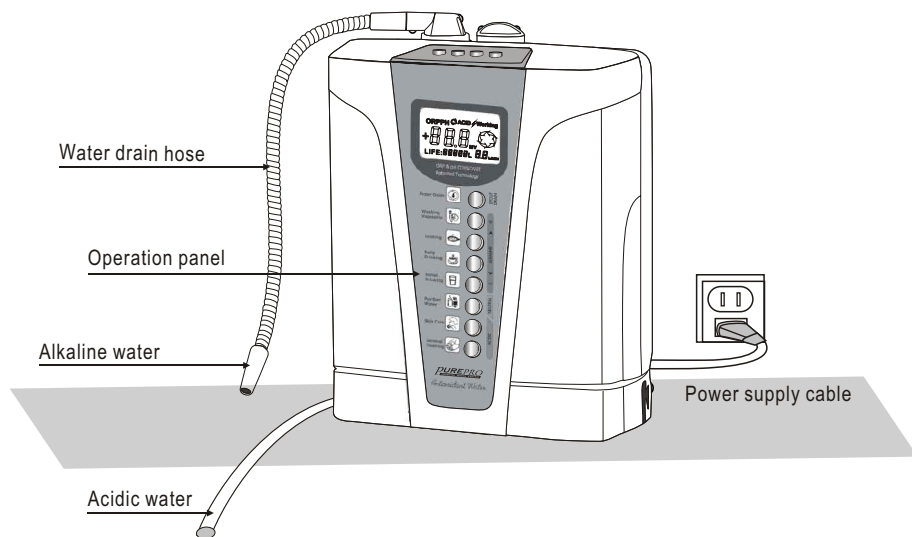
### (Stage 6) Alkaline Plus Filter

The Alkaline plus filter changes the acidic RO water into a perfect Natural Alkali Calcium Ionized Water. The Alkaline plus filter simply gives back minerals such as ionized calcium, magnesium, sodium, potassium ion, which were taken away while purifying the water. (Service Life: 1 Years)

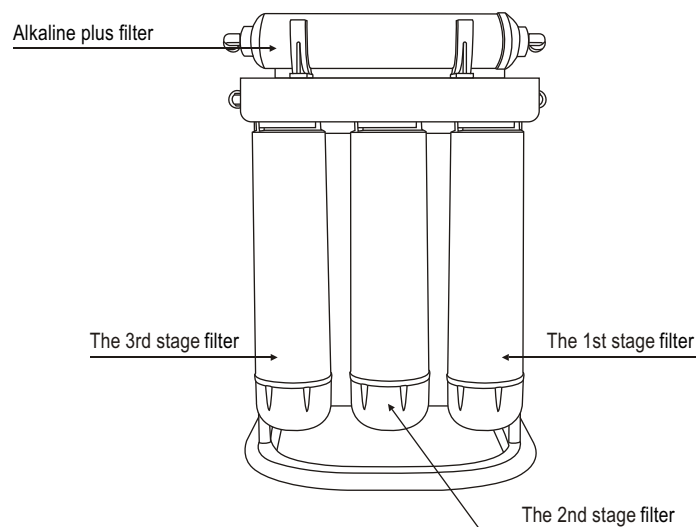


## Preparation

### Preparation: (Water Ionizer)



### Preparation: (Reverse Osmosis)

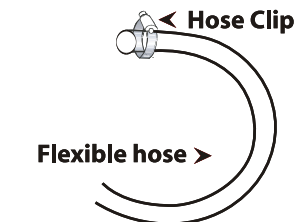
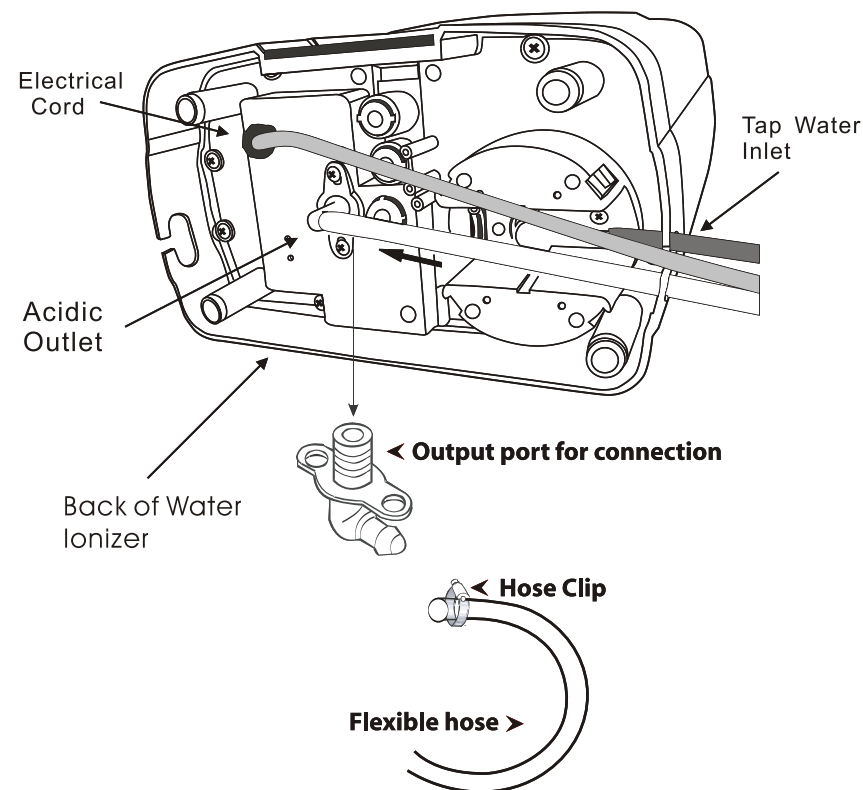


## Installation Diagram

### Flexible hose :

First: cut a sufficient length of hose to reach from the “Acidic Water Output” port to the point where you would like the acidic water to drain.

Second: cut a sufficient length of hose to reach from the Water Ionizer diverter to the water input port on the bottom right side of the Water Ionizer. Use hose clamps for a secure fit.

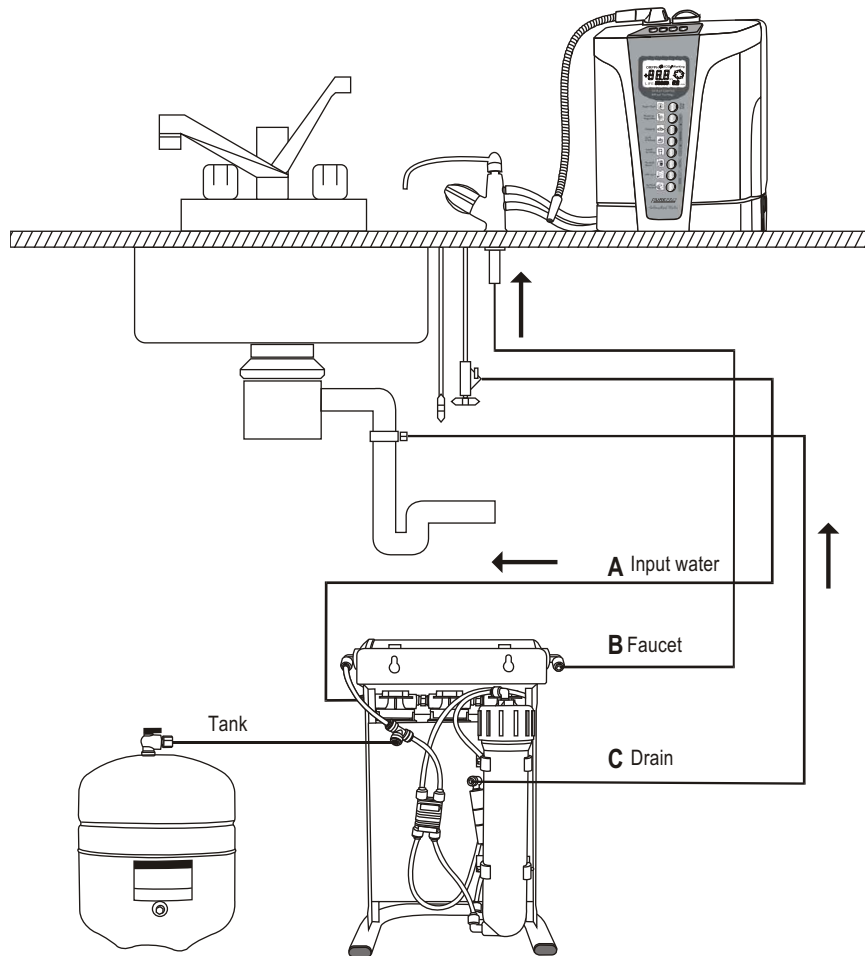




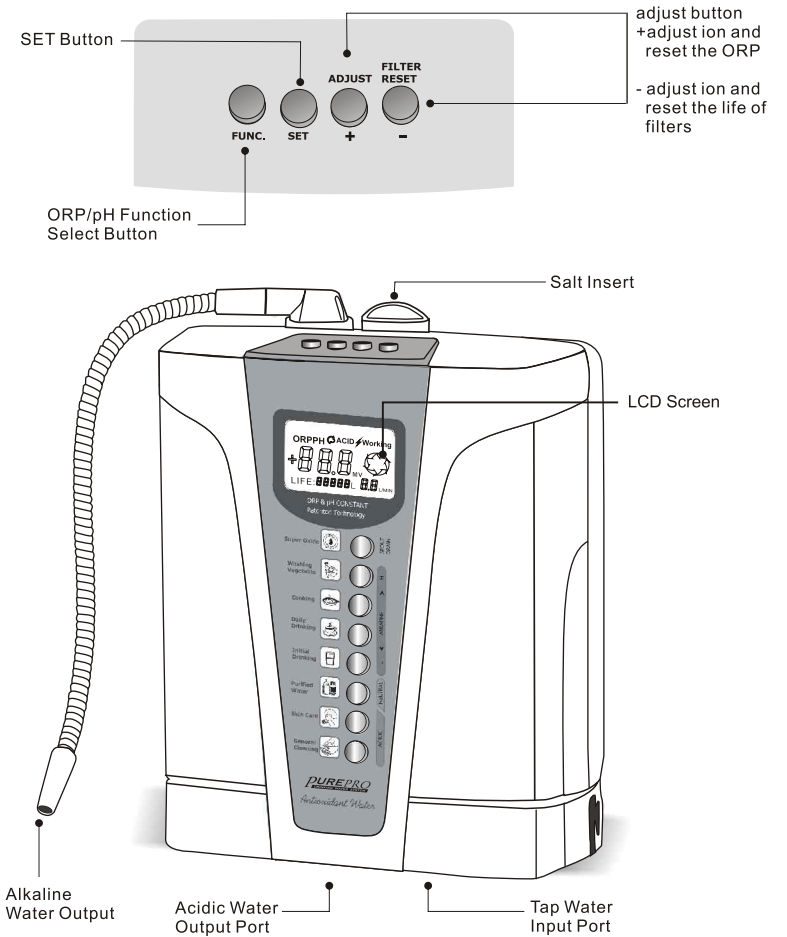
## Tubing Connection Diagram

### CONNECTING THE COLORTUBING:

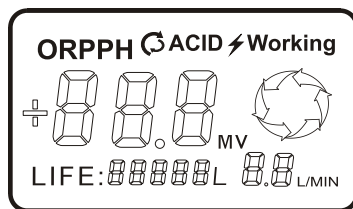
- Connect the WHITE tubing to the water supply connector.
- Connect the BLUE tubing to the sink top faucet.
- Connect the BLACK tubing to the drain saddle.
- Connect the RED tubing to the storage tank.



## Panel Operations and Functions



## Panel Operations and Functions



1. Change the filter (see previous page).
2. Turn the water flow completely off.
3. Press the FUN button until the LCD screen reads "CLN".
4. While CLN is displayed on the LCD screen press the SET button. The LCD screen should start to blink "CLN".
5. While CLN is blinking press the "-" button. This will reset the filter "LIFE" at the bottom of the LCD screen.

SPOUT  
DRAIN**Super Oxide**

Only for cleaning. Turn on the Add hole on the top → take out the inside tube, and add the eatable salt (Do not put eatable salt over the circle hole on the top) → put back the Inside tube in Add hole. → Tight the top → pull the bottom of Super Acid Water → turn on the water starter.

H

**Washing Vegetable**

Level 4: Ideal setting once the body has adjusted to drink alkaline water. Use this level in the fourth week and thereafter.

**Cooking**

Level 3: Higher alkaline setting than Level 2. Drink at this level for the third week.

**Daily Drinking**

Level 2: Higher alkaline setting than Level 1. Drink at this level for the second week.

**Initial Drinking**

Level 1 : Lowest alkaline setting. Drink at this level for the first week.

NEUTRAL

**Purified Water**

Purified water: Suitable to drink with medication and suitable for infant and adult.

ACIDIC

**Skin Care**

Level 1 (pH 5.5): Skin care washing

**General Cleaning**

Level 2: For baths or washing kitchen utensil.

## Panel Operations and Functions

### Function (FUN):

- 1) The function button allows you to switch between pH and ORP readings on the LCD screen when the water is flowing through the unit.
- 2) When the water is not flowing through the unit you may press the FUN button to bring up the pH reading for each setting.

### Setup (SET):

The setup button is the button labeled "SET". This button is used to calibrate the pH readout on the LCD screen. You may use a digital pH meter to see the exact pH your unit produces. After obtaining an exact reading, press the SET button. The pH reading on the LCD monitor will start blinking. Using the "+" and "-" buttons, set the pH to what the digital meter reads. Press SET to lock in the pH value for that setting.

### pH Increase (+):

This button can increase the levels of pH or ORP displayed on the LCD screen.

### Reset (-):

- 1) This button can decrease the levels of pH or ORP that is displayed on the LCD screen.
- 2) The reset button can also reset the filter life (see Filter Replacement Procedure page)

