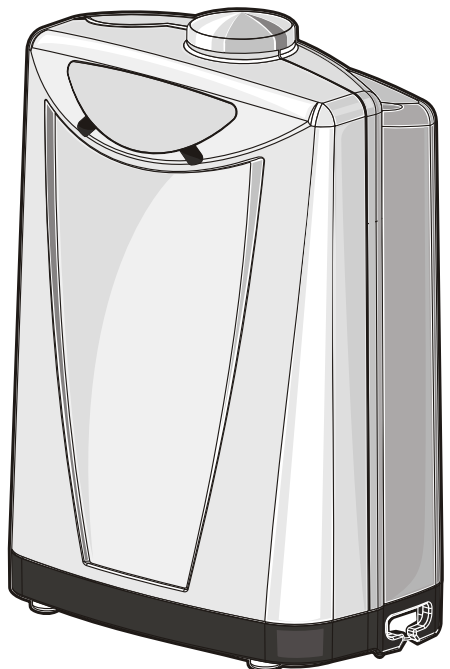
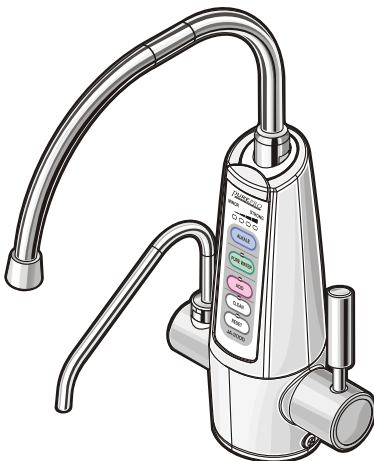


JA-2000 User's Manual

- Read this manual carefully before operation of this machine, and keep it well for future reference.
- We will not be responsible for any fault or accidents due to improper installation or operation of this machine.

[CONTENT]

Precautions	1
Components and accessories	2
Diagram for mounting of cock holder	3
Assembling diagram	4
LED description and drinking suggestion	5
Operating panel	6
Operating method	7
Daily care (Cleaning of electrolysis cell)	8
Replacement of filter elements	9
Troubleshooting of faults	10
Main specification	11



Precautions

Please read this precautions carefully before operation of this multi-functional electrolyzed water machine and observe, otherwise, damage to machine or health of families may occur.

- Discharge water for about 30 seconds to 1 minute every morning.
- Never take medicine using alkaline calcium ion water.
- Acid-free patient shall never drink alkaline calcium ion water; for those weak or liver-kidney patients, or patients under treatment, consult the doctor before drinking of alkaline calcium ion water.
- Never use aluminum or copper vessel; otherwise, chemical reaction may occur.
- Acid ion water can only used for beauty, care or cleaning. (Never drink)
- Never flush the machine using water directly.
- Never block, bend or twist water outlet and/or drain hose.
- Never hang up the acid drain hose during operation, so as to ensure smooth drain of residual water.



CAUTION!

Read following precautions carefully before operation.
In case of any problems, please contact the dealer.

STEP 1. Water supply



- Never use dirty water such as well water or ground water, or whose polluted by heavy metal.

STEP 5. Replacement



- Replace filter elements at regular basis.

STEP 2. Away from hot



- Never use combined with water heater. Water temperature shall be less than 40°C. Free of hot or direct sunshine.

STEP 6. Dismounting forbidden



- Never dismount this machine freely.

STEP 3. Drinking



- Drink the electrolyzed ion water as early as possible. (In enclosed container, Guarantee term is 1 day under normal temperature, and 2 days in refrigerator).

STEP 7. Maintenance



- Keep this machine free of strong shock or hit.

STEP 4. Cleaning



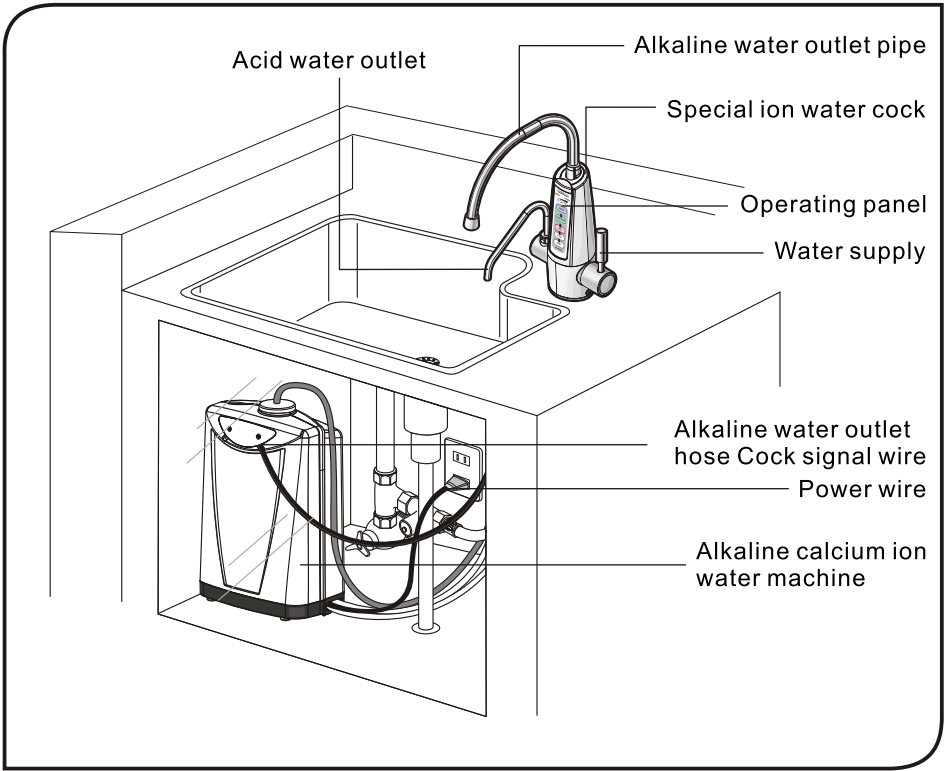
- Never clean the machine using volatile solvent such as alcohol. Clean using soft cloth or that dipped in soapy water.

STEP 8. Care



- Pull out the power plug for long time idle.

Components and accessories



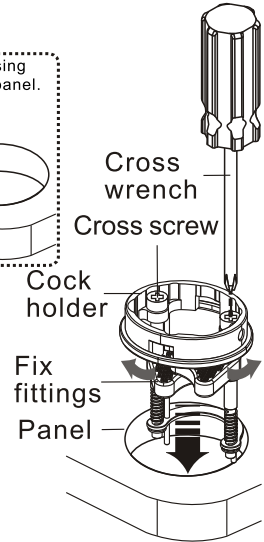
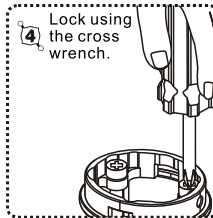
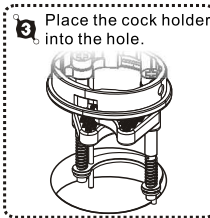
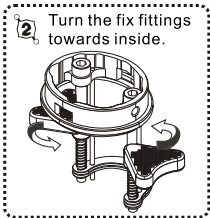
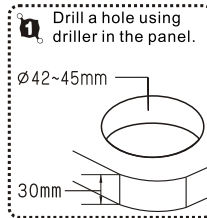
Accessories Check if following accessories are complete.

Accessories					
<p>HP connection hose</p>	<p>Hexangular wrench (3mm)</p>	<p>Tee</p>	<p>Hose clamp x 6</p>	<p>PH testing agent 5ml</p>	<p>Water inlet/drain hose</p>

Diagram for mounting of cock holder

A Cock assembling diagram

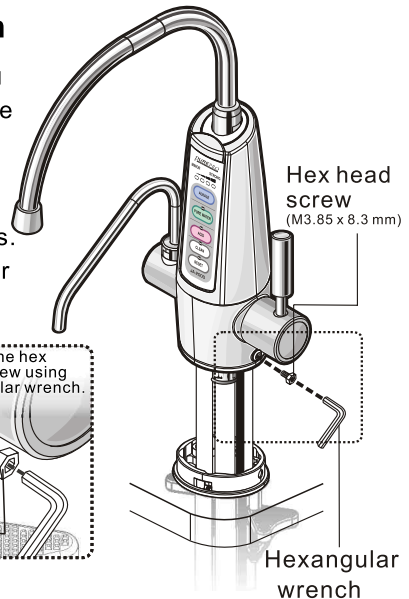
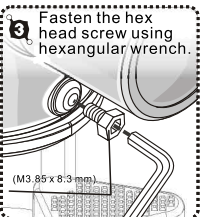
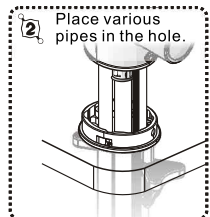
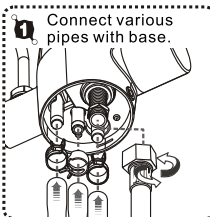
1. Drill a hole with Dia. Of 42~45mm in the panel using driller.
2. Turn the fix fittings from outside to inside the same large as cock holder.
3. Place the cock holder into the hole.
4. Turn the fix fittings towards outside, and tighten the lock screw onto the panel using cross wrench.



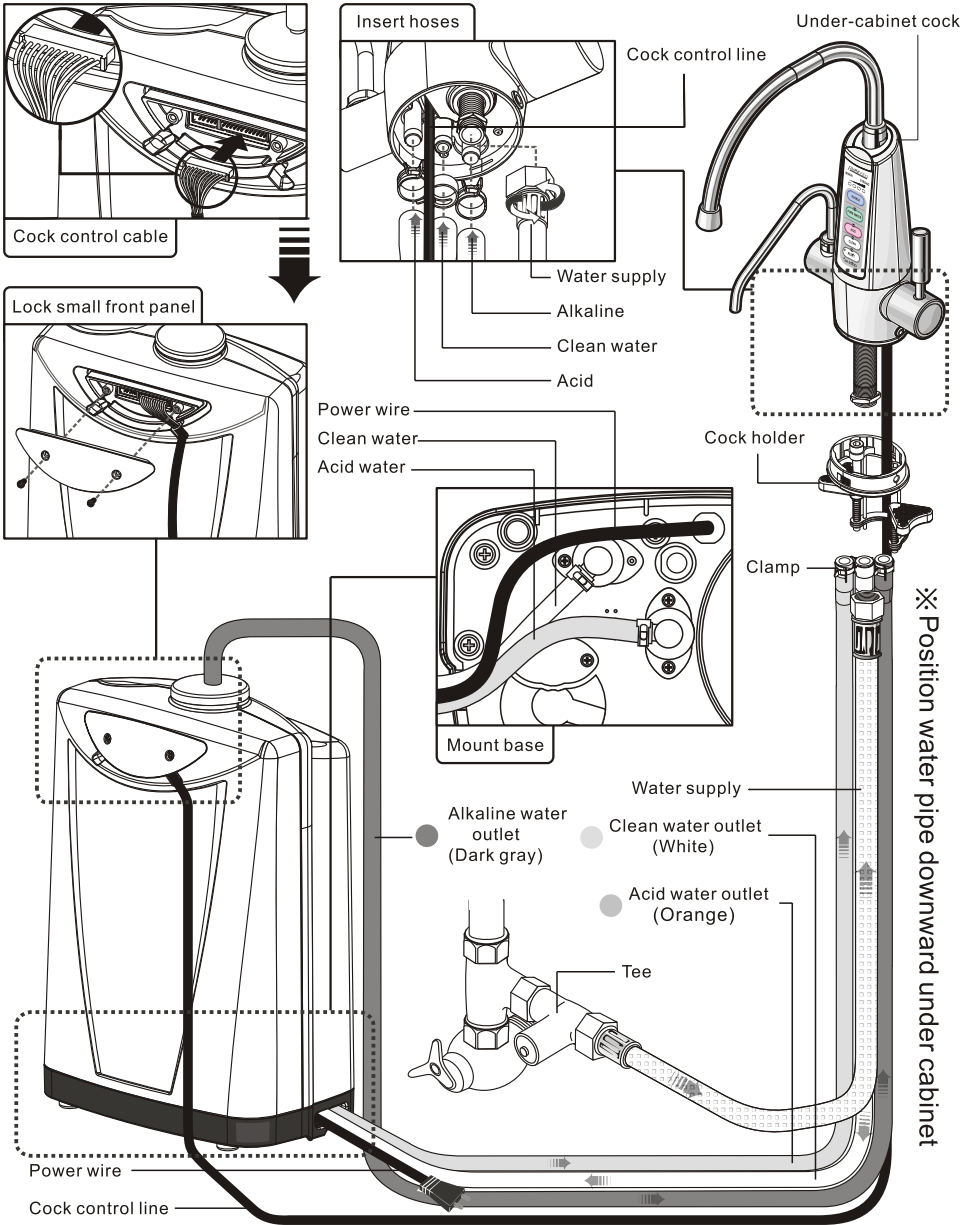
CAUTION! Table thickness cannot more than 30mm.

B Cock assembling diagram

1. Connect various pipes (Clean water, alkaline, acid and water supply connection pipe) with hoses on the base and secure using clamp. (See assembling diagram in page 4 of the instruction)
2. Place the cock holder together with connected hoses onto the holder downwards.
3. Fasten the hex head screw using hexangular wrench at last.

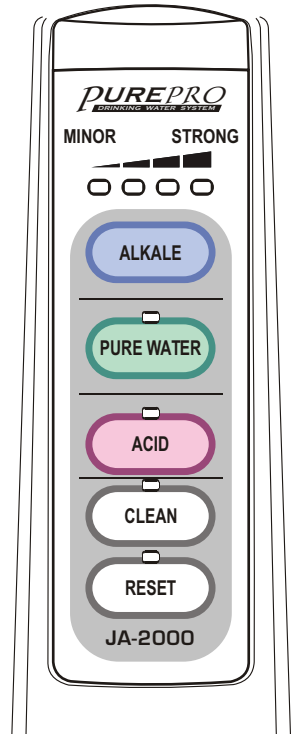


Assembling diagram



LED description and drinking suggestion

Phase	Suggested service	LED display
Strong alkaline	Cooking	
Alkaline 3	Daily drinking	
Alkaline 2	Cook and make tea	
Alkaline 1	Primary drinking	
Pure water	Have medicine make milk	
Acidic	Beauty, clean face and cleaning (never drink)	
Clean	Reinforced and manual cleaning of electrolysis cell	
Reset	Reset of filter element	



CAUTION!

- As the lifetime LED (red) illuminates, the lifetime of filter element has reached that for total water treatment amount! Replace the filter element immediately to ensure water quality and sanitation. (See Replacement of filter element in page 9)
- After fetching water: The system will clean the electrolysis cell automatically after the water supply is switched off. During cleaning, the red and blue water signal LEDs illuminate alternately and the flow from drain pipe decreases.
The signal LED turns off automatically after cleaning and drainage stops.
- To drink alkaline calcium ion water, start from phase Alkaline 1 (for about 1-2 weeks), and then change to Alkaline 2 or Alkaline 3 gradually based on personnel health status.
- Never drink water for cleaning.

Operating panel

① Water signal LED (Red, blue)

A Blue LED: (drinking water)

Illuminate as output of alkaline ion water or pure water (drinking water)

B Red LED: (non-drinkable water)

Illuminate as output of weak acid ion water (non-drinkable water).

C Red/blue LED illuminate alternately:

Illuminate alternately during cleaning of electrolysis cell.

② Alkaline value LED

Change according to alkaline value (Left to right)

Green LED: Alkaline 1→Alkaline 2→ Alkaline 3



Blue LED: Strong alkaline

③ Pure water LED (Green)

④ Weak acid LED (Red)


Weak acid water is only used for cleaning
(Never drinking).

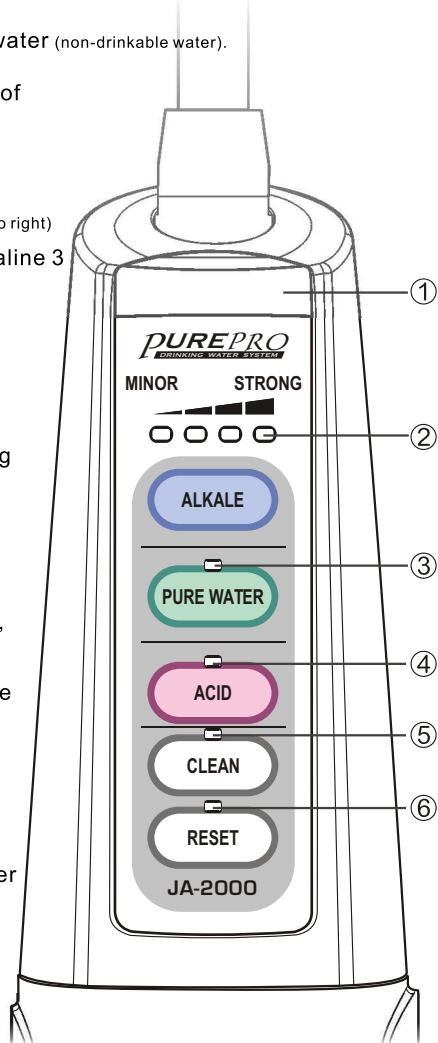
⑤ Clean LED (Red)

Electrolysis cell cleaning and forced cleaning LED. As this LED is ON, switch on water supply and press  "Clean" key, cleaning LED flashes; switch to alkaline  automatically after the LED is out and the music stops, and the cleaning process ends.

⑥ Replacement LED (Red)




This LED illuminates as the lifetime of filter elements reaches that for total water flow. Replace the element immediately.

Then press and hold  "Reset" key for 3 seconds, then release after a "Click" sounds and this LED is out.



Operating method

Fetch alkaline ion water

1. Press the  "Alkaline" key on panel to choose Alkaline 1/Alkaline 2/Alkaline 3/Strong alkaline (Judge by alkaline value  LED), Switch on water supply, water enters the cell for electrolysis, and alkaline calcium iron water flows from alkaline water outlet for drinking. Or
2. Turn on water supply switch to directly fetch the preset Alkaline 3  calcium ion water (for daily drinking) from outlet.
3. Turn off the water supply switch at last. The system will clean the electrolysis cell automatically after water supply is switched off (Red water signal LED and blue water signal LED flash alternately); the flow from drain pipe decreases. The signal LED turns off automatically after cleaning and drainage stops.

Alkaline water outlet

Water signal LED


Water supply switch

Acid water drainage

CAUTION!

Read this manual (LED description and drinking suggestion in page 5) carefully before fetching of alkaline calcium ion water, and get to know properties of various alkaline phases.


Fetch acid ion water (Acid ion water: for cleaning, never drink)

1. Press the "Acid"  key on panel and switch on water supply, water enters the electrolysis cell; then acid iron water flows from alkaline water outlet.
2. Turn off the water supply switch at last.

CAUTION!

During fetching of acid water, alarm will be given for non-drinking.

Fetch pure water (Filtered but not electrolyzed)

1. Press the "Pure water"  key on panel and switch on water supply, pure water flows from alkaline water outlet for drinking.
2. Switch off water supply at last.

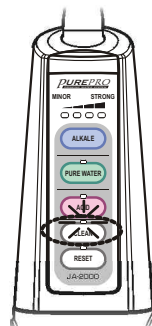
CAUTION!


Never drink acid ion water under any conditions, otherwise damage to your health may occur!

Daily care (Cleaning of electrolysis cell)

Forced cleaning of electrolysis cell


For effective care of electrolysis cell, it is preset that as the electrolyzed water exceeds 50 liters, “Clean” LED (red) on cock operating panel will illuminate!




1. Switch on water supply.
2. Press the “Clean”  key on panel after start. Cleaning begins as music sounds.



CAUTION!

The system begins to clean the electrolysis cell. Never leave at this time to ensure safety of the machine. Switch off water supply after cleaning!

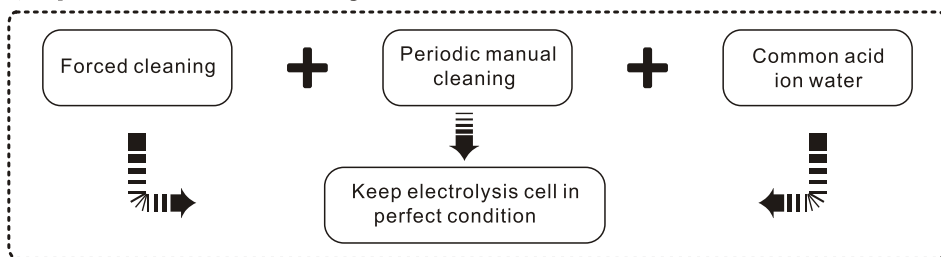
3. After the music stops, the system will switch to preset Alkaline 3 (LED  on operating panel illuminates); Switch off water supply to finish forced cleaning of electrolysis cell. Manual cleaning

Manual cleaning



You can press the “Clean”  key to start cleaning of electrolysis cell at any time for care, operating as follows:

1. Switch on water supply. (Now preset Alkaline 3 ion water flows from alkaline outlet)
2. Press the “Clean”  key on panel. The cleaning begins as music sounds.
3. Now cock water signal LEDs (red and blue) flash alternately and water flows from the drainpipe. Never leave at this time.
4. The music stops about 1 minutes later, cleaning process ends; switch to the preset Alkaline 3 (LED  on operating panel illuminates) phase.
5. Switch off water supply before leaving.

Tips for care of electrolysis cell

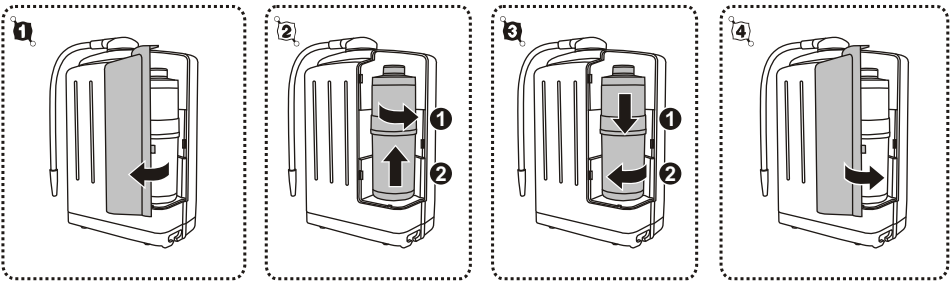


Replacement of filter elements

As the “Reset”  LED (red) on panel illuminates, the lifetime of filter element has reached that for total water treatment amount! Replace the filter element immediately and press “Reset”  key. The “Reset” LED is out.

To replace the filter, turn off the water and switch off the ionizer unit by the mains and unplug it. Then remove the unit from the wall where it is attached.

1. Open the cover of filter.
2. Twist the cartridge filter anticlockwise. Then pull up the cartridge filter.
*note: the body of ionizer shall stay up-right to prevent water from coming into the system.
3. Inset a new cartridge filter. Twist the filter clockwise and lock it securely.
4. It is recommended that the extended cleaning programmed be run to check for leaks.



CAUTION!

- Tighten the filter element against the scale; otherwise the machine will not operate normally.
- Only use special filter element to ensure normal functions of the machine.
- Even though the display of filter element doesn't reach replacement standard, in case of abnormal odor or taste (meaning compromised performance of filter element), replace in time.
- In case non-original filter element is used, guarantee terms will be invalid.

Suggestion

- Using tap water as water source.
- For different quality of water source, additional 2~3 upstream filter elements will be helpful for lifetime of the machine and filter elements.

Troubleshooting of faults

Fault	Reason and troubleshooting
Water signal LED is OFF (No electrolysis)	<ul style="list-style-type: none"> ● Too low water pressure, machine not works normally. Mount a pressure pump. ● Check if the filter element is mounted properly. Improper mounted filter elements will result in abnormal operation of machine. ● Straighten all bent pipes.
Calcium ion water or clean water flow not smooth	<ul style="list-style-type: none"> ● Necessary to replace the filter element? (Filter element may be purchased from dealers) ● Necessary to loosen the cock a little more? Loosen the cock additionally as necessary. ● Is the cleaning LED On? Please perform cleaning.
Electrolyzed alkaline calcium ion water is feculent	Electrolyzed alkaline calcium ion water is feculent in general due to the contained air bubble generated during reaction. The water will become transparent after a while and suitable for drinking.
Dark brown object in ion water	<ul style="list-style-type: none"> ● Possible minor dark brown ferrous content, harmless to health. ● Try to drink lower phase alkaline calcium ion water.
White floater in alkaline calcium ion water container or film on inner wall	<ul style="list-style-type: none"> ● Solid calcium compound as a result of reaction of calcium ion and carbonic acid in the air. No damage for drinking. ● The film is solid calcium compound. Clean using vinegar.
For long time idle	Pull out the plug, and dismount the filters mounted on branch pipe and purifier.
Flow from outlet decreases	Possible solid calcium compound on pipe wall blocking the outlet. Contact the service center for cleaning or purchase special cleaning filter element from our company.

Contact the service center if necessary and answer following questions, so as to help them to deal with the problems fast and accurately.

1. Is there any LED ON on the panel of cock? What color?
2. Is there any water flowing from the alkaline outlet or drain pipe after water supply is witted on? Is there any LED ON?
3. When did the machine fail? By what means did you try to deal with?
4. Did you replace any filter element or parts recently? By your self or service center?
5. Purchase date and place.

Main specification

Voltage		AC220V/50Hz(optional AC110V)
Filter element classification		Cocoanut fiber activated carbon element
Applicable water source		Tap water
Electrolysis	Electrolysis method	Continual
	Water output (Generated water flow)	1~3.5 L/Min
	Phases of electrolysis	Alkaline: 4 phases; Weak acid: 1 phase Clean water: 1 phase
	PH value of water in electrolysis cell	Alkaline: PH8.0~PH10 Acid: PH3.5~PH7.0(approximate)
	Electrolysis cleaning	Automatic cleaning (lasting for about 1 minute)
Water purification capability	Residual chlorine	About 12000 Liters (or less depending on water quality)
	Impurity	About 12000 Liters (or less depending on water quality)
Precautions		Suitable for tap water source
Flow threshold for replacement of filter element		About 12000 Liters (or less depending on water quality)
Alarm for replacement of filter element		Lifetime LED (red) illuminates
Machine body under cabinet	Dimension	About 210mm (W) x 125 mm (D) x 330mm (H)
	Weight	4kg
Cock under cabinet	Type	Stand electric key panel
	Mount-hole	42~45mm
	Mounting method	Upper-mounting
	Water outlet	Rotary
Working water Temp		40°C or less